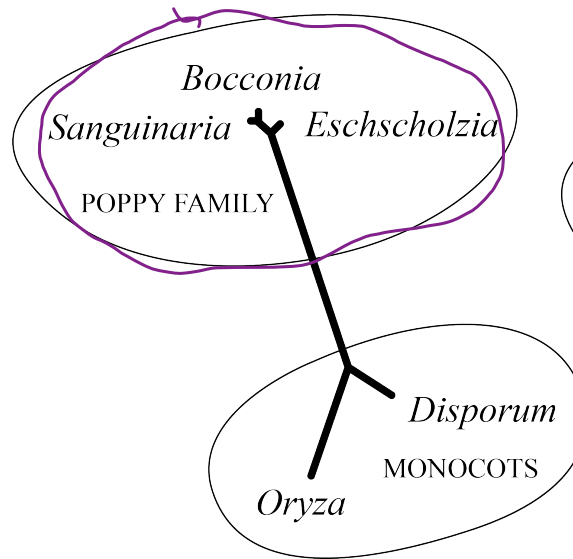


# Homework 8 revisited



*Sanguinaria canadensis* (bloodroot)

5' end (219 sites)



3' end (237 sites)

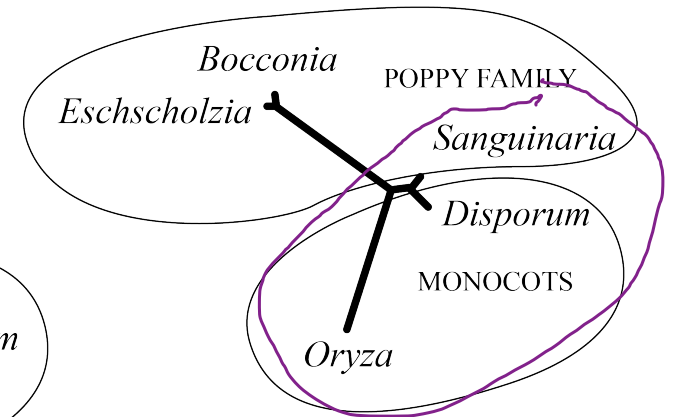


TABLE 5. Marginal posterior probabilities of tree topologies for the 5', 3', and concatenated data sets

Topology	5'	3'	Merged	Concatenated
(D, O, (E, (B, S)))	0.7738	—	0.3869	—
(D, S, (O, (E, B)))	—	0.6436	0.3218	—
(D, O, (S, (B, E)))	0.1108	0.1760	0.1434	1.0000
(D, (S,O),(E, B))	—	0.1804	0.0902	—
(D, O, (B, (E, S)))	0.1155	—	0.0578	—